

NEMO Version 2023-09-29

Release Letter

Contents

1. Summary.....	3
2. Application Signature Features	4
Natural Performance Index (NPI).....	4
Natural Leverage Index (NLI).....	4
Unsupervised Learning	4
Meta-data Driven.....	5
Hyper-Dashboard	5
Process Mining.....	5
Complexity Mining	6
All Details.....	7
Dynamic Dashboards.....	8
Instantly Live	8
3. Technology Signature Features.....	9
Push rather than Pull Data Copying	10
Flat Data Structure.....	10
Process Chains.....	10
Dynamic Calculations	10
Metrics Driven	10
In-memory Columnar Data Management.....	11
Upside-down Visualization.....	11
4. New and Changed Capabilities	11
Process Mining Analyzer (NEW).....	11
NEMO Open Access (NEW).....	12
4.1 Sales	12
4.2 Purchasing	13
4.3 Production.....	14
4.4 Open Items.....	15
4.5 Liquidity.....	16
Analytical Application "Modern Finance (MOFI)" (NEW).....	17
proALPHA Analyzer Export "UmsatzDetail" (NEW).....	17
5. Newly Exported Columns	19

6. Compatibility	25
Functional Limitations	25
Component Status	25
Known Issues	25
7. Documentation	26
Additional documentation (NEW and UPDATED)	26
8. Availability	26

1. Summary

As of September 29, 2023, proALPHA has released NEMO version 2023-09-29.

NEMO – standing for Natural Enterprise Management Optimizer – is a new breed of AaaS – Analytics-as-a-Service – offering from proALPHA. NEMO analyzes all sorts of event data. In particular NEMO analyzes business processes as performed with proALPHA ERP. The objective of NEMO is to enable better daily decisions by relating operational activities (input factors) with financial results (output factors).

NEMO 2023-09-29 introduces “NEMO Open Access”. This new capability enables any 3rd party business intelligence tool to make use of NEMO data.

There are three parts:

- ready-made applications for Power BI and Qlik
 - NEMO Sales, Purchasing, Production, Liquidity, Open Items and Stock
- ready-made connectors for Power BI and Qlik
 - NEMO reports as integration point
- open APIs for connecting arbitrary data analysis tools
 - NEMO reports as integration point

Furthermore, NEMO 2023-09-29 introduces NEMO Analytical Applications. These applications are geared to make the daily use of NEMO easier. The first prototype is an application which leverages the Natural Financial Journal we introduced before. We call this first of its kind “Modern Finance” (abbreviated “MOFI”). We’d welcome feedback to chart its further course.

Improvements were also made in Process Mining. The new Process Mining Analyzer View complements the Process Map View and offers new functionality to do in-depth analysis of processes.

Last but not least with “UmsatzDetail” we introduce the first proALPHA Analyzer export as a NEMO project. Start migrating from proALPHA Analyzer to NEMO and leverage your analytics to the next level.

In addition, NEMO version 2023-09-29 features various error corrections and performance improvements. Also, various housekeeping improvements have been implemented.

Reports (IMPROVED)

- (SAMPLE) ABC/XYZ Analysis

2. Application Signature Features

Natural Performance Index (NPI)

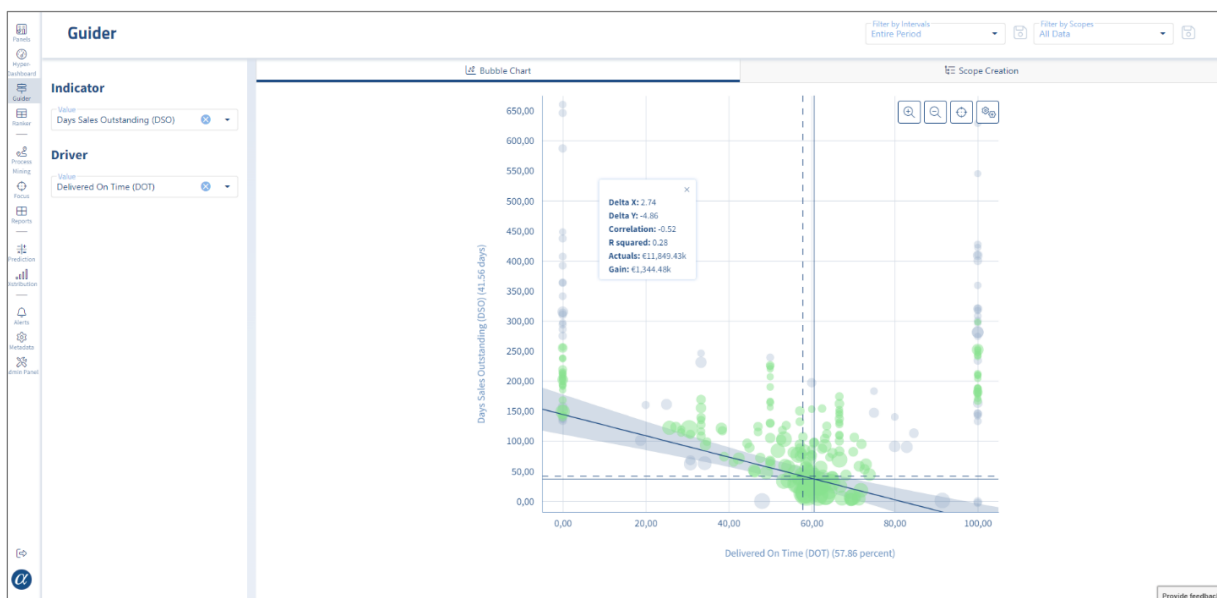
The NPI measures and ranks the fitness of a business. High NPIs indicate a significant improvement potential which is likely to be achieved. They help the user find and decide between the available optimization opportunities and are key to the daily decision support provided by NEMO.

Natural Leverage Index (NLI)

The NLI measures and ranks the degree of efficiency (“Wirkungsgrad”) of a certain operational measure. High NLIs indicate a significant leverage which is likely to be achieved. They help the user find and decide between the available opportunities and as such facilitate the daily decision support provided by NEMO.

Unsupervised Learning

Since there is no optimum for business process optimization typical machine learning approaches don't apply. Hence NEMO leverages robust advanced statistics out of the so-called space of unsupervised learning algorithms.



Meta-data Driven

NEMO is not only data- but also metadata-driven. This means that virtually all metrics and scopes can be formed – either manually or automatically.

The screenshot shows the 'Metadata' configuration page in NEMO. On the left is a navigation menu with categories like Alert Conditions, Attribute Groups, Exported Columns, Defined Columns, Derived Columns, and Metrics. The 'Days Inventory Outstanding (DIO)' metric is selected. The main area displays configuration options for this metric, including a search bar, 'Conflict State' (NoConflict), 'Display Name' (Days Inventory Outstanding (DIO)), and 'Internal Name' (d_i_o). A description explains that DIO is a measure of tied-up cash in inventory, calculated as inventory value divided by daily consumption. Below this, there are sections for 'Tag: #make', 'Unit: days', and 'Optimization Orientation: Min'. The 'Column definition and first aggregation' section lists columns like 'd_i_o_days', 'd_i_o_days_weighted', 'mvmt_average_costs_total_corp_cur', and 'part_i_d', each with an aggregation of 'maximum'. A 'Second aggregation' section is also present.

Hyper-Dashboard

NEMO continuously ranks all business process correlations. This enables dynamic dashboards which are complementing classical dashboards.

The screenshot shows the 'Hyper-Dashboard' interface. On the left, there are sections for 'Indicators' (Days Sales Outstanding (DSO)) and 'Drivers' (Delivered On Time (DOT)). The main area features a radar chart titled 'Best Opportunities to optimize indicators (by improving drivers)'. The chart compares 'Average' (light blue) and 'Target' (green) values across several dimensions. The dimensions and their values are: '[[mvmt_m_r_p_area_target: ["Produktion"]]]' (Average: 56,80, Target: 51,65), '[[mvmt_m_r_p_category: ["kommissionsgesteuert"]]]' (Average: 46,50, Target: 41,36), '[[customer_a_b_c_classification: ["A"]]]' (Average: 36,21, Target: 31,86), '[[part_type:61]]' (Average: 31,86, Target: 31,86), '[[part_product_line:1381]]' (Average: 31,86, Target: 31,86), and '[[part_i_d:10190]]' (Average: 31,86, Target: 31,86). The chart also includes a legend for 'Average' and 'Target' and a 'Scope' dropdown set to 'All Data'.

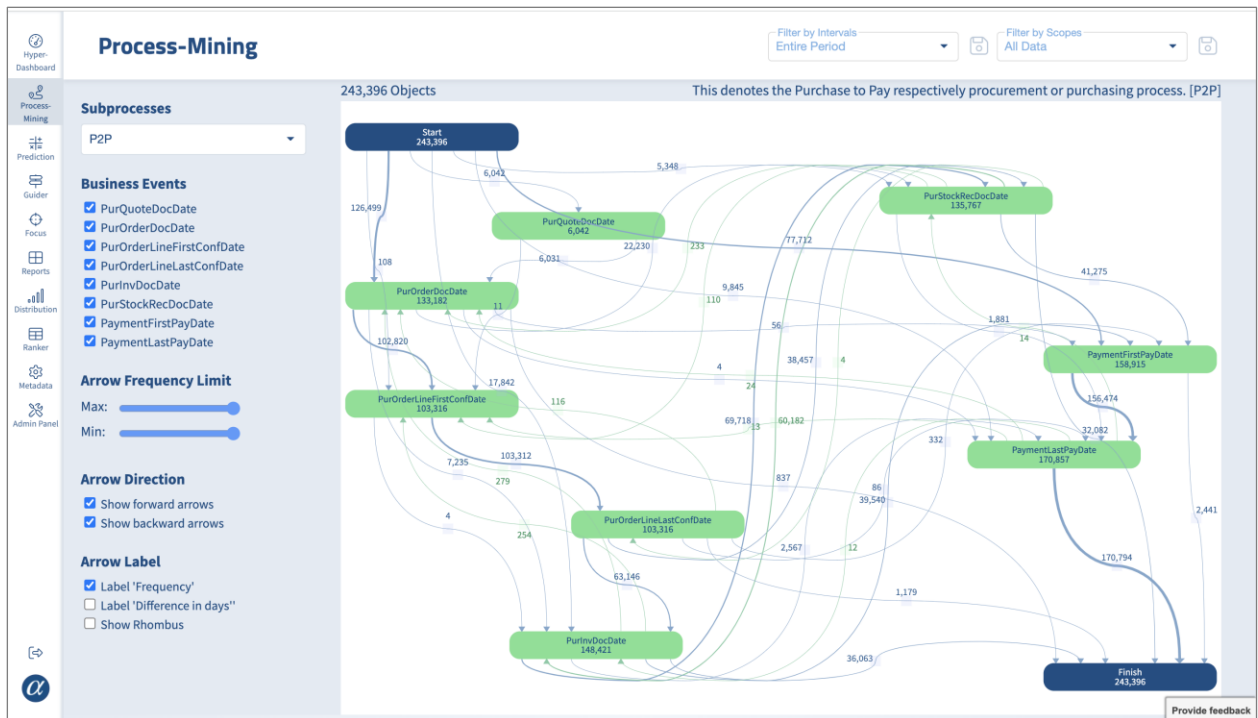
Process Mining

Inherently NEMO discovers all executed business processes. Process Mining visualizes these as so-called process maps. The edges (lines, links) represent business process variants. They can be captured in scopes for further analysis (e.g. Focus and Guider). The nodes (vertices, points) represent the business events which, chained up, represent the executed business activities.

Stand: 2023-09-28 – Subject to change

humanIT Software GmbH | Brühler Straße 9 | D-53119 Bonn

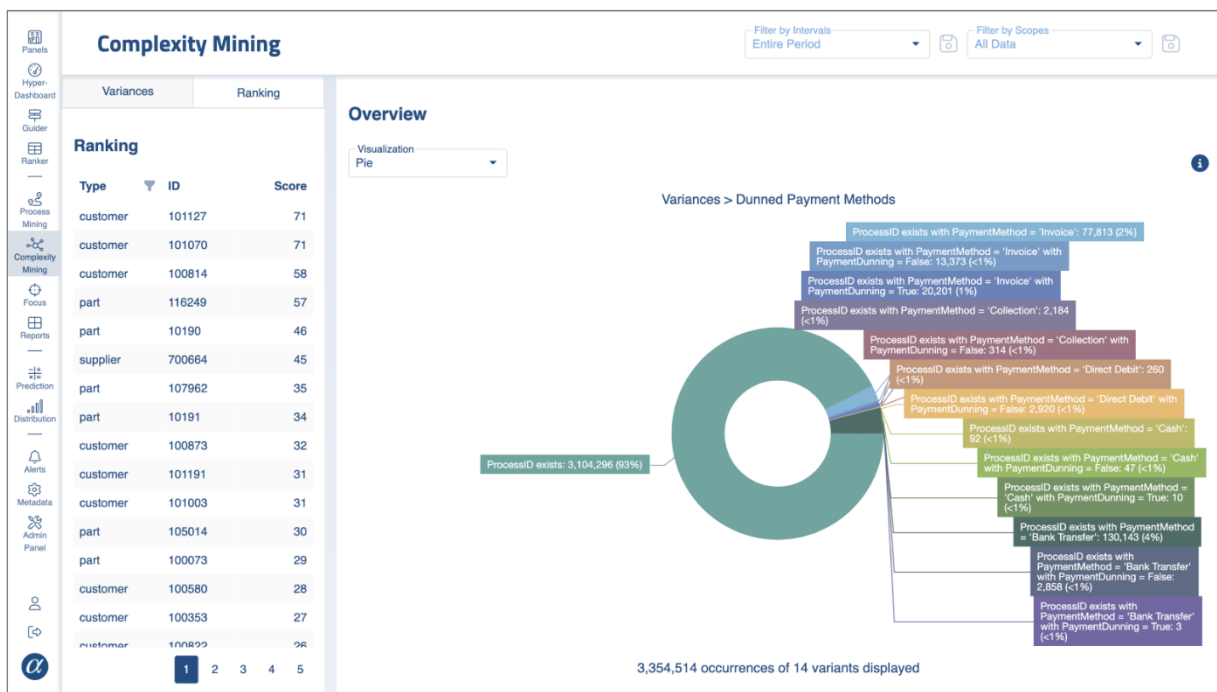
P: +49 228 90954-0 | Fax: +49 228 90954-11 | info@humanit.de | www.nemo-ai.com



Complexity Mining

Similarly, NEMO detects automatically all executed business process variants. Each and every variant increases the complexity of the respective business.

Increasing complexity increases complexity costs. This phenomenon can be analyzed as well.



All Details

NEMO works always on details. There is no need to do any pre-aggregations at all. This means that the user can drill down to the detailed business documents at any point in time and instantaneously.

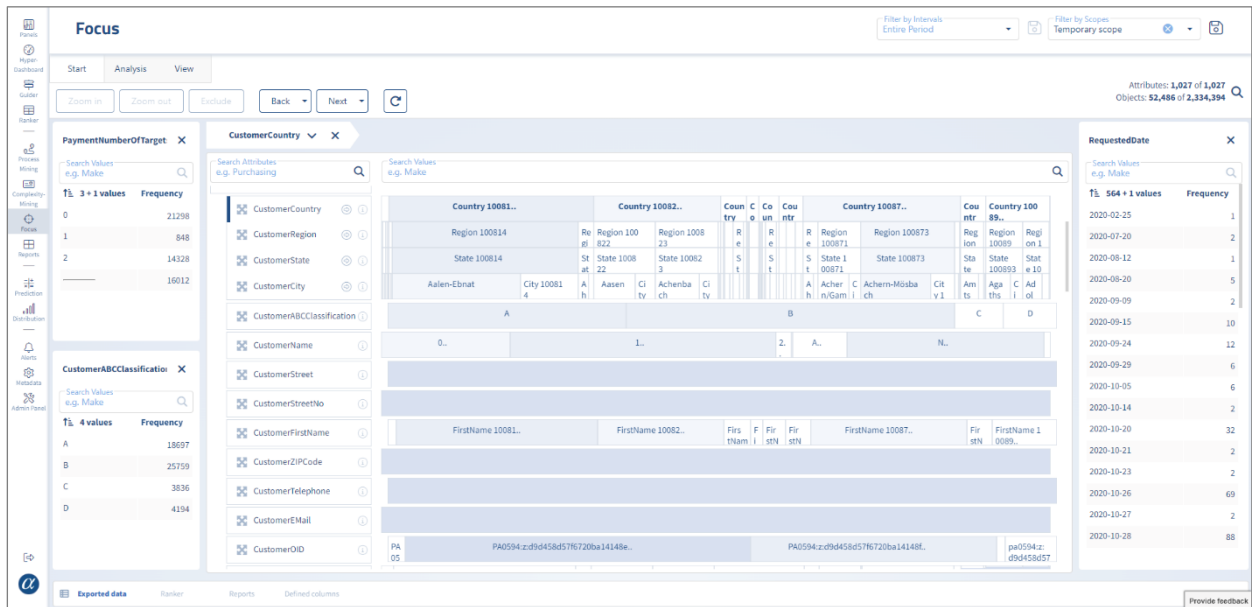
Here an example for the Payment Method Invoice. The Hyper-Dashboard provides an overview of the top measures for process improvements.



The Ranker table gives the details behind the Hyper-Dashboard.

NPI	NLI	Driver	Driver Value	Indicator	Indicator Value	R Squared	Correlation	Actuals	Gain	Scope
1,228,230	150	Delivered On Tim...	49.38%	Days Sales Outst...	46.39 (days)	0.49	-0.70	€8,190.30k	€2,523.89k	[[mvmmt_m_r_p_ar...
1,045,971	140	Delivered On Tim...	47.95%	Days Sales Outst...	48.06 (days)	0.46	-0.68	€7,476.48k	€2,252.74k	[[mvmmt_m_r_p_ca...
951,839	133	Delivered On Tim...	47.78%	Days Sales Outst...	48.00 (days)	0.46	-0.68	€7,176.66k	€2,084.53k	End products
891,949	143	Delivered On Tim...	57.14%	Days Sales Outst...	46.28 (days)	0.43	-0.66	€6,245.62k	€2,053.92k	[[customer_a_b_c...
626,635	146	Delivered On Tim...	49.19%	Days Sales Outst...	56.78 (days)	0.53	-0.73	€4,280.45k	€1,174.27k	[[part_type:61]]
626,153	146	Delivered On Tim...	49.19%	Days Sales Outst...	56.80 (days)	0.53	-0.73	€4,280.45k	€1,173.60k	[[part_product_li...
561,369	165	Delivered On Tim...	49.76%	Days Sales Outst...	53.35 (days)	0.68	-0.82	€3,405.99k	€827.81k	[[part_id:"10190...
554,675	167	Delivered On Tim...	44.88%	Days Sales Outst...	53.40 (days)	0.49	-0.70	€3,318.21k	€1,139.90k	[[mvmmt_m_r_p_ca...
544,680	178	Delivered On Tim...	49.32%	Days Sales Outst...	58.99 (days)	0.39	-0.62	€3,057.86k	€1,410.07k	[[part_product_li...
528,335	63	Delivered On Tim...	53.52%	Days Sales Outst...	46.12 (days)	0.30	-0.55	€8,361.60k	€1,748.98k	Storage Area 100...
503,446	148	Delivered On Tim...	57.14%	Days Sales Outst...	58.93 (days)	0.41	-0.64	€3,407.57k	€1,231.54k	[[supplier_industr...
439,326	197	Delivered On Tim...	39.77%	Days Sales Outst...	72.99 (days)	0.42	-0.65	€2,227.98k	€1,043.02k	[[part_id:"11177...
389,940	130	Delivered On Tim...	47.73%	Days Sales Outst...	61.67 (days)	0.41	-0.64	€2,991.62k	€955.86k	[[part_product_li...
388,081	157	Delivered On Tim...	38.06%	Days Sales Outst...	66.90 (days)	0.32	-0.57	€2,478.03k	€1,214.12k	[[part_product_li...
386,742	149	Delivered On Tim...	45.28%	Days Sales Outst...	51.06 (days)	0.46	-0.68	€2,587.24k	€841.74k	[[part_type:5]]
320,720	204	Delivered On Tim...	36.56%	Days Sales Outst...	74.43 (days)	0.52	-0.72	€1,575.23k	€614.98k	[[part_a_b_c_class...
265,822	22	Delivered On Tim...	57.74%	Days Sales Outst...	46.25 (days)	0.13	-0.36	€11,849.21k	€2,030.06k	[[part_a_b_c_class...
244,851	165	Delivered On Tim...	37.20%	Days Sales Outst...	65.49 (days)	0.32	-0.57	€1,485.17k	€755.03k	[[part_id:"11177...
231,143	320	Delivered On Tim...	52.03%	Days Sales Outst...	50.89 (days)	0.58	-0.76	€722.04k	€398.64k	[[part_a_b_c_class...

And the Focus view gives the details behind the Ranker table. And all within seconds.



Dynamic Dashboards

From all details arbitrary dashboards can be derived as well.



Since these so-called Panels are automatically built-in conjunction with Scopes they are correct by nature.

Especially there is no dispute about the calculation of metrics and key figures anymore since those are isolated from the Panels.

Instantly Live

NEMO doesn't need any customization. Even chart-of-account or financial calendar are not needed for NEMO to function.

Stand: 2023-09-28 – Subject to change

humanIT Software GmbH | Brühler Straße 9 | D-53119 Bonn

P: +49 228 90954-0 | Fax: +49 228 90954-11 | info@humanit.de | www.nemo-ai.com

3. Technology Signature Features

The NEMO technology is characterized by

- Integration
 - All applications leverage and maintain the same data
- Speed
 - Response times should be as fast as possible
 - Development times – customers or us – should be as short as possible

These objectives are achieved by leveraging following unique approaches.

Push rather than Pull Data Copying

All data are regularly pushed from the source system to NEMO.

For our ERP we push all essential order types now:

- Purchase Order
- Production Order
- Sales Order

This means following supply chain processes are covered now:

- Source
 - Purchasing, Procurement
- Make
 - Inventory
 - Production
- Deliver
 - Sales
- Return Handling
 - Sales
 - Purchasing
- Finance
 - Accounting Journal

Flat Data Structure

There is only one table in NEMO.

There are no aggregations (cubes) nor indices.

There are no Joins at all.

Process Chains

All data are organized along the performed business processes.

Dynamic Calculations

All calculations are performed in real-time.

There are no data preparation runs.

Metrics Driven

All control data (metadata) are available to all applications rather than being specific to a single application.

All control data are dynamically changeable – by the user or by us.

Metrics are maintained as separate entity rather than specific to each application.

In-memory Columnar Data Management

Our data are particularly suited to this mode of data management.

The resulting compression rates (easily 1:10) are very beneficial to the overall performance.

Upside-down Visualization

Rows and columns are inverted compared to MS Excel.

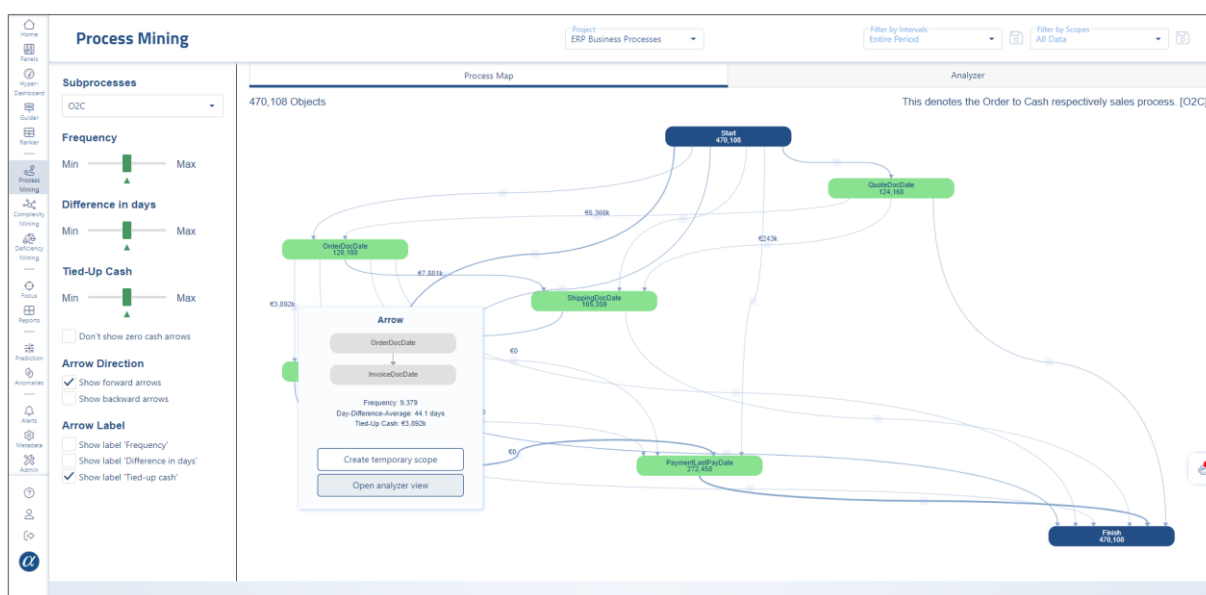
This makes patterns (e.g. populations of columns) easier to spot.

4. New and Changed Capabilities

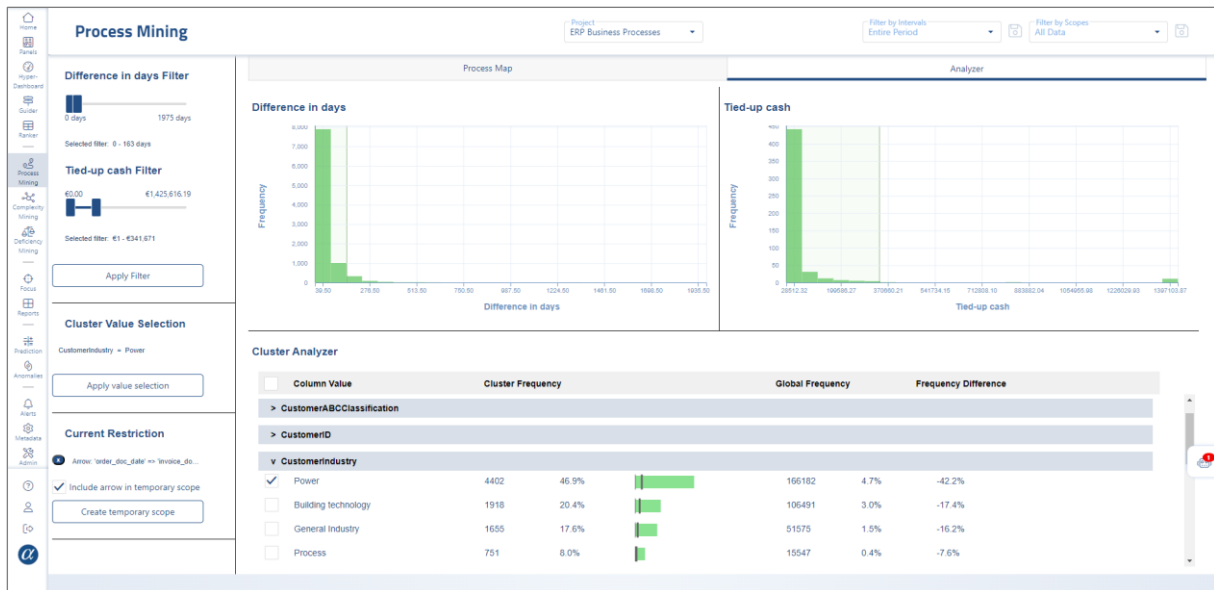
Process Mining Analyzer (NEW)

Analyzing processes in more detail based on insights gained from the process map can now be done with the new Process Mining Analyzer view.

Pick a specific process step and open the analyzer view to gain deeper insights into it.



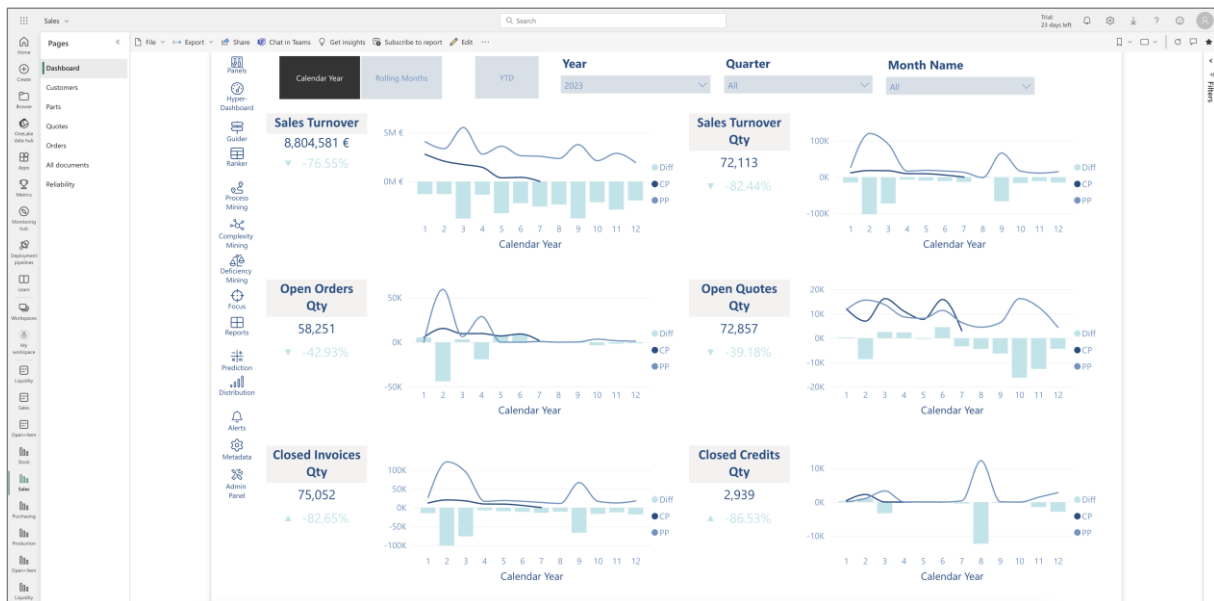
Apply filters for tied-up cash or time periods to restrict the data even more. Or use the cluster analyzer similarly to the one of the Guider to focus on significant aspects.



NEMO Open Access (NEW)

Since there exists ample and detailed documentation here only a few screenshots illustrating the NEMO Open Access applications.

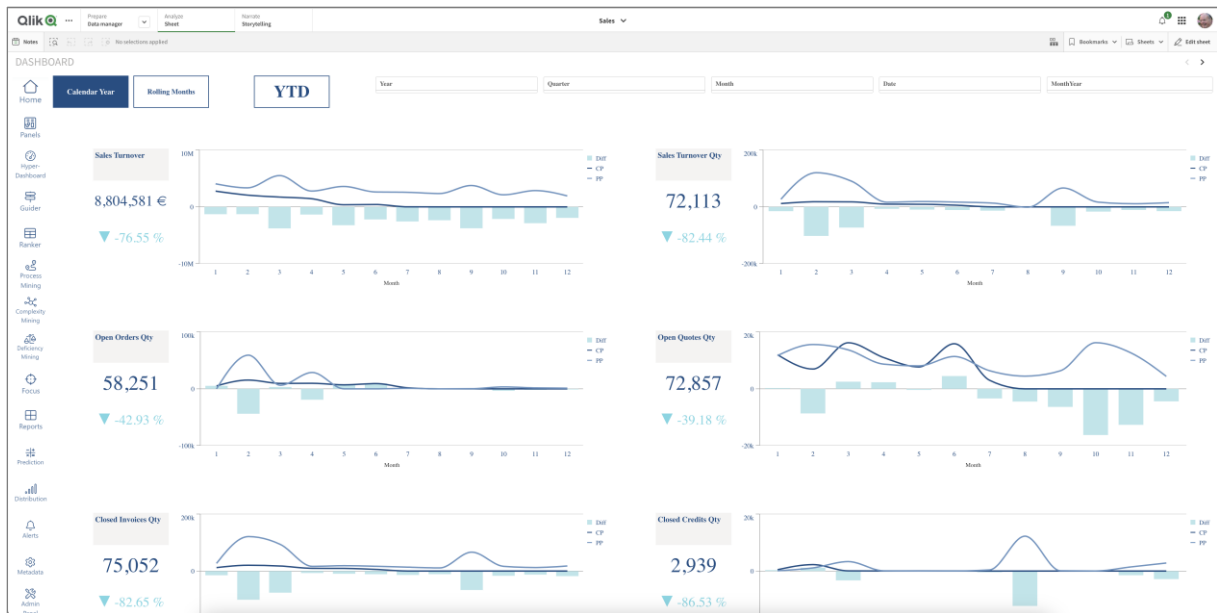
4.1 Sales



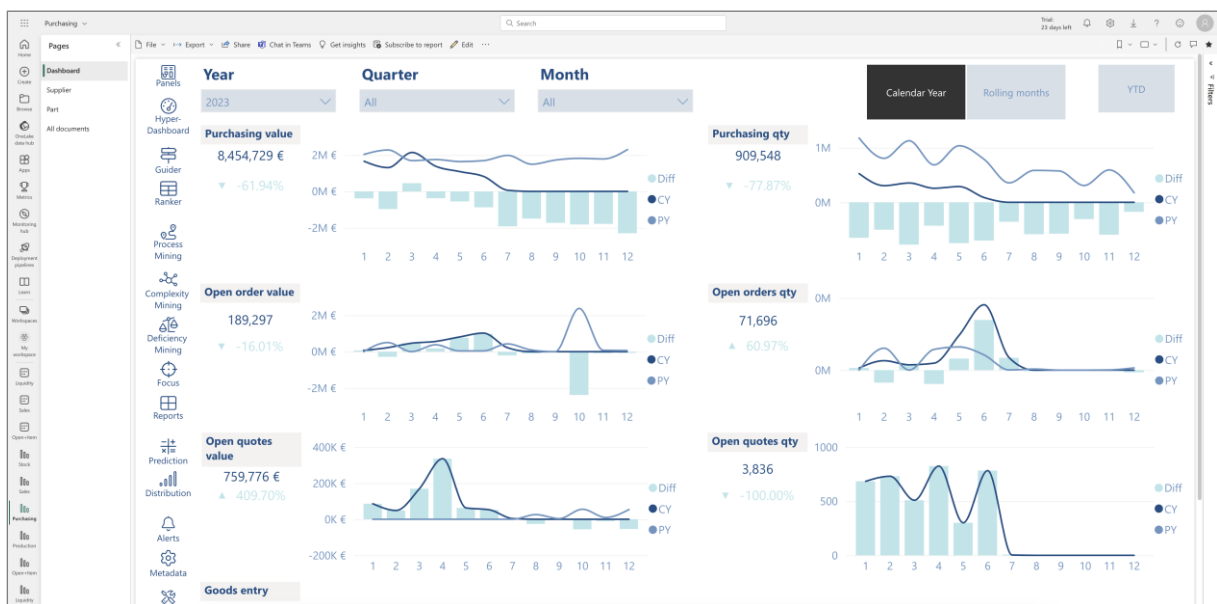
Stand: 2023-09-28 – Subject to change

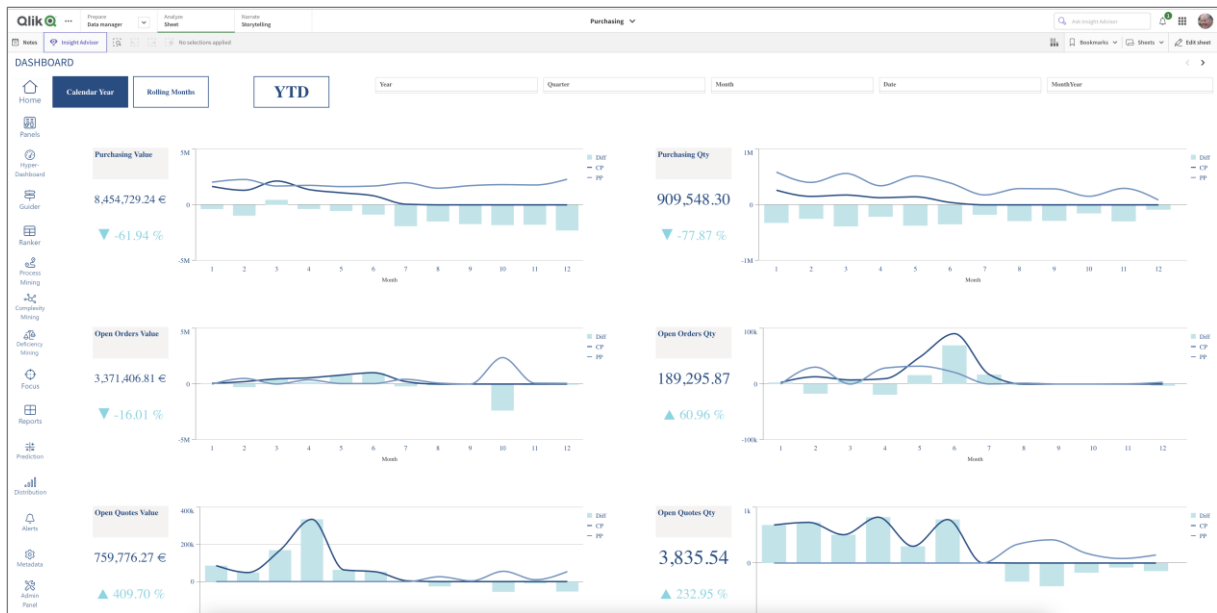
humanIT Software GmbH | Brühler Straße 9 | D-53119 Bonn

P: +49 228 90954-0 | Fax: +49 228 90954-11 | info@humanit.de | www.nemo-ai.com



4.2 Purchasing





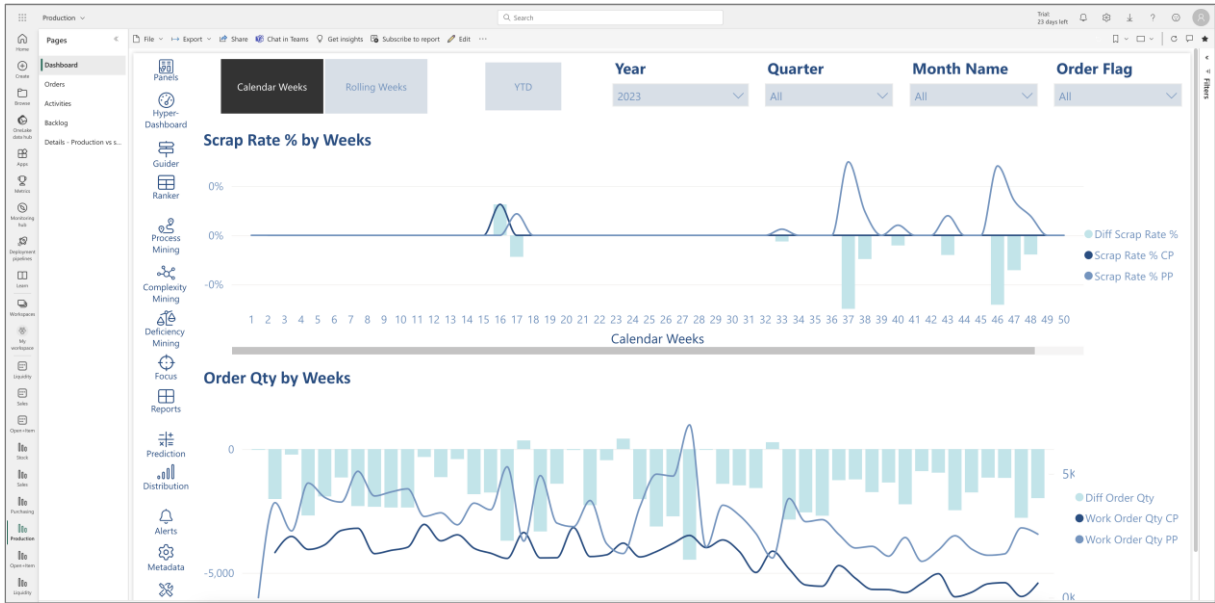
4.3 Production



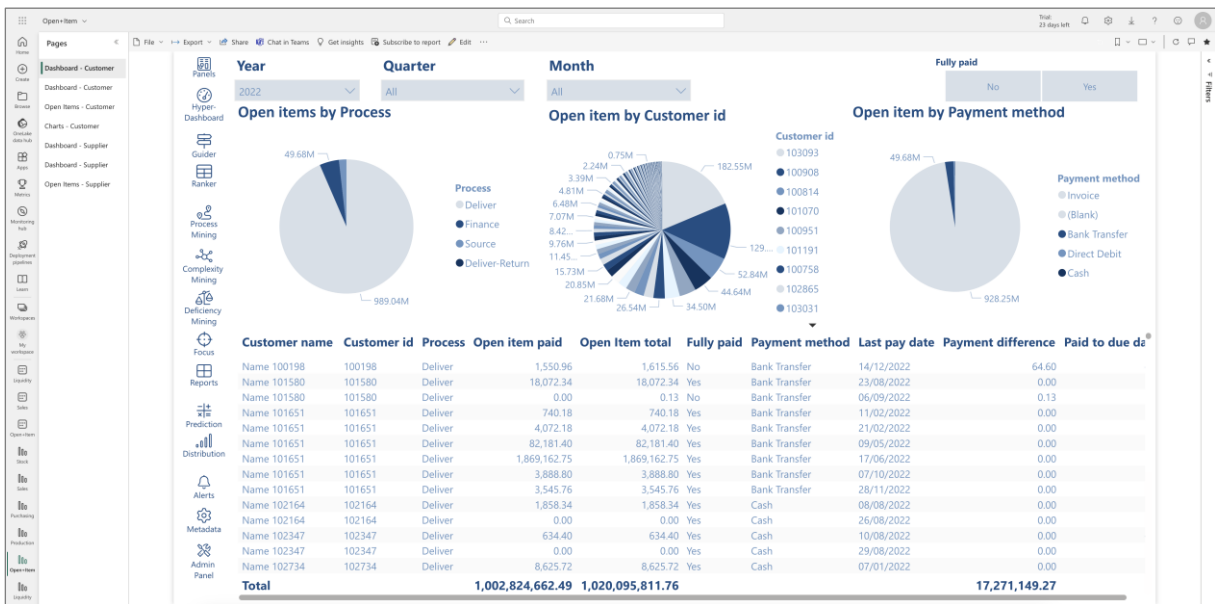
Stand: 2023-09-28 – Subject to change

humanIT Software GmbH | Brühler Straße 9 | D-53119 Bonn

P: +49 228 90954-0 | Fax: +49 228 90954-11 | info@humanit.de | www.nemo-ai.com



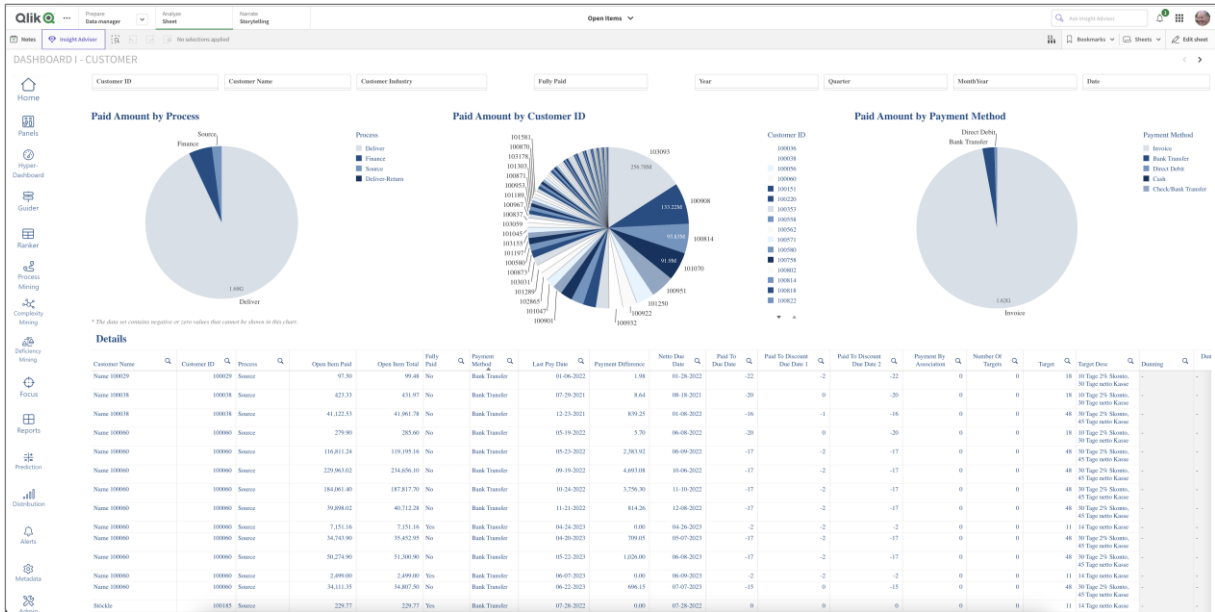
4.4 Open Items



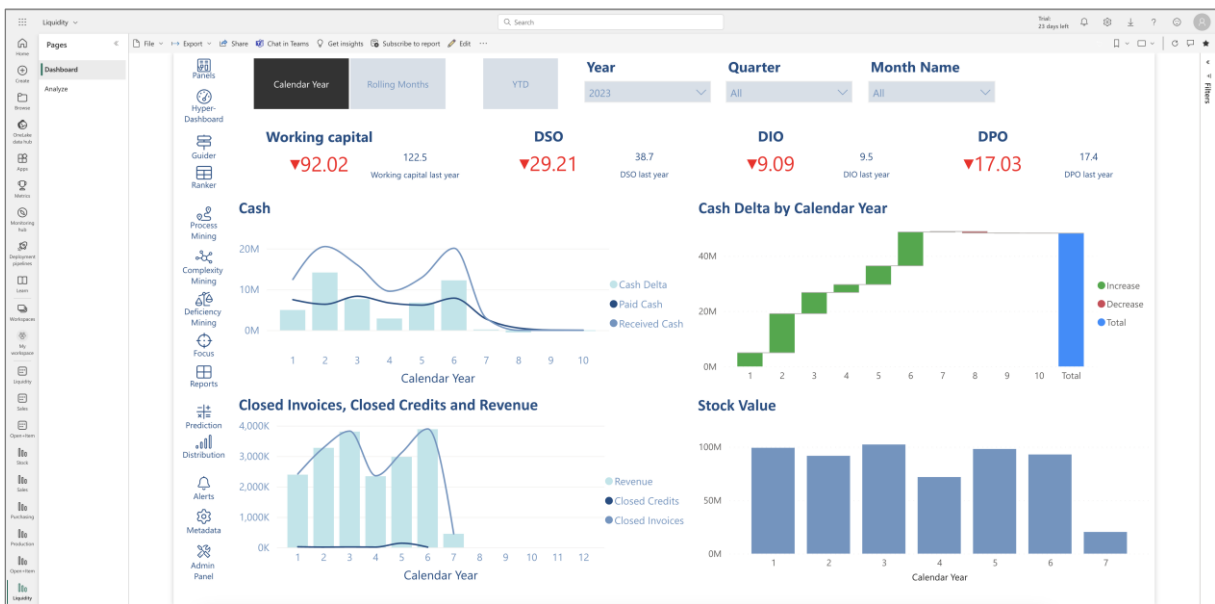
Stand: 2023-09-28 – Subject to change

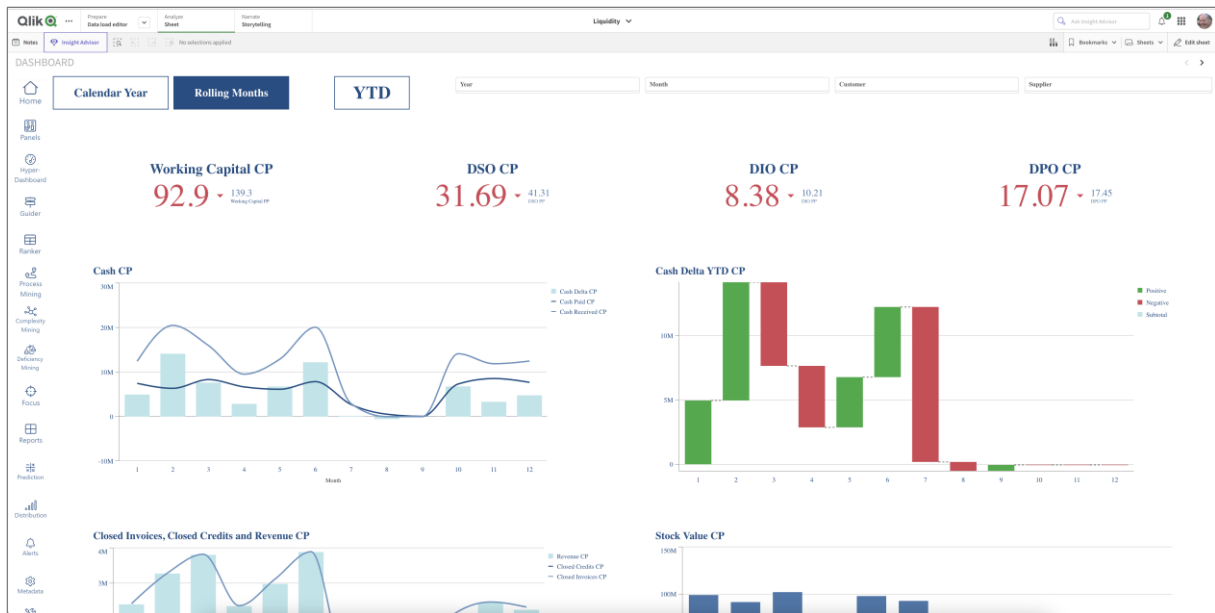
humanIT Software GmbH | Brühler Straße 9 | D-53119 Bonn

P: +49 228 90954-0 | Fax: +49 228 90954-11 | info@humanit.de | www.nemo-ai.com



4.5 Liquidity

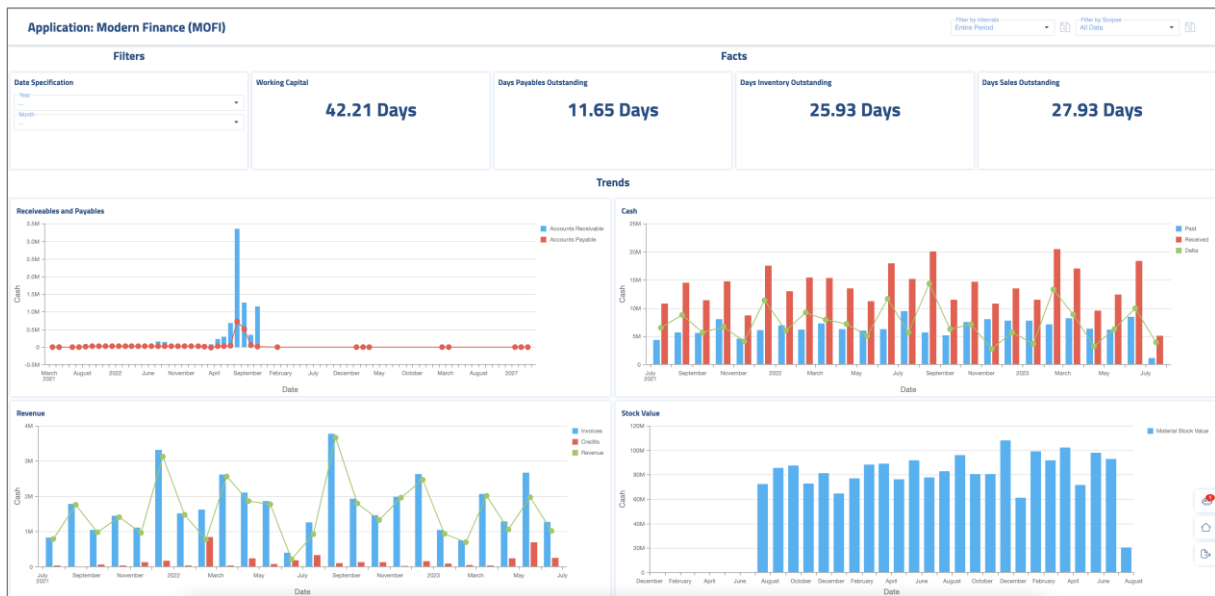




Analytical Application “Modern Finance (MOFI)” (NEW)

NEMO Analytical Applications are supposed to ease the usage of NEMO in the daily business. They are not adding anything which could not be done with NEMO beforehand (e.g., with Panels, Reports and Metrics).

NEMO Modern Finance (MOFI) combines C-level management key figures from the P&L and the balance sheet.



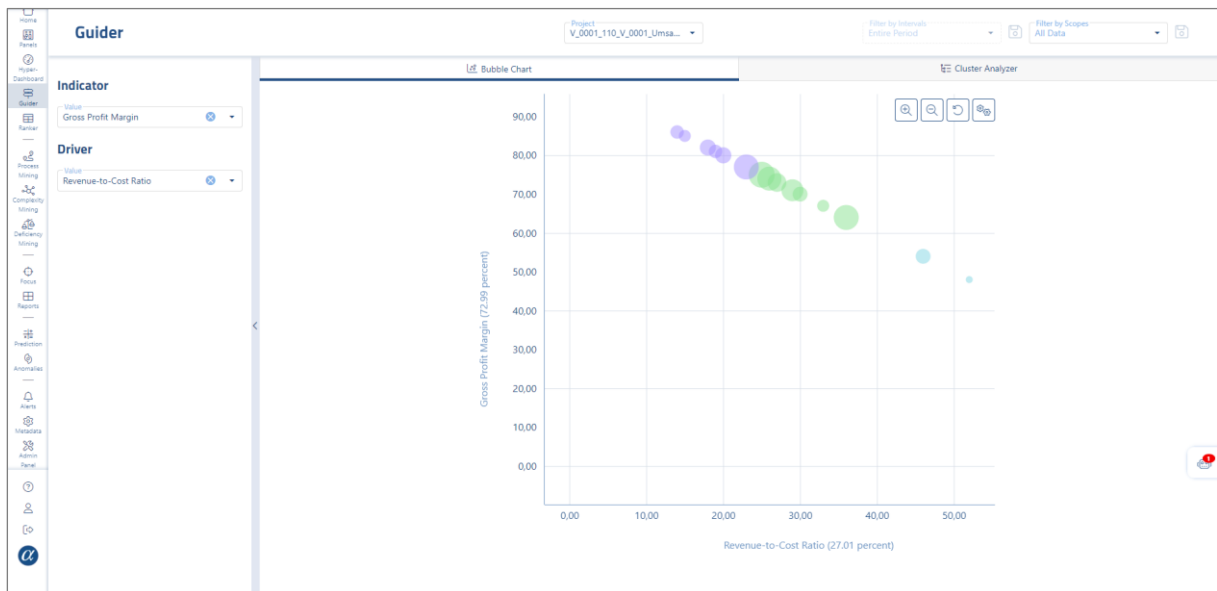
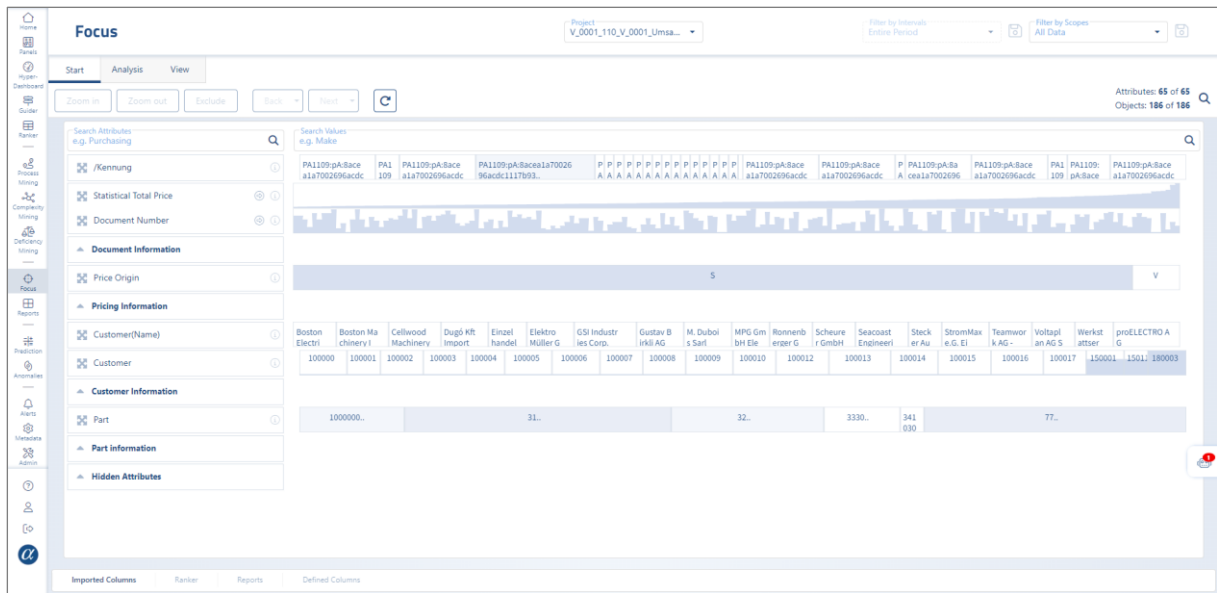
proALPHA Analyzer Export “UmsatzDetail” (NEW)

Start migrating from proALPHA Analyzer to NEMO. The UmsatzDetail export is now available as a NEMO project. Make use of all apps of the NEMO platform to reach a new level of analytics.

Stand: 2023-09-28 – Subject to change

humanIT Software GmbH | Brühler Straße 9 | D-53119 Bonn

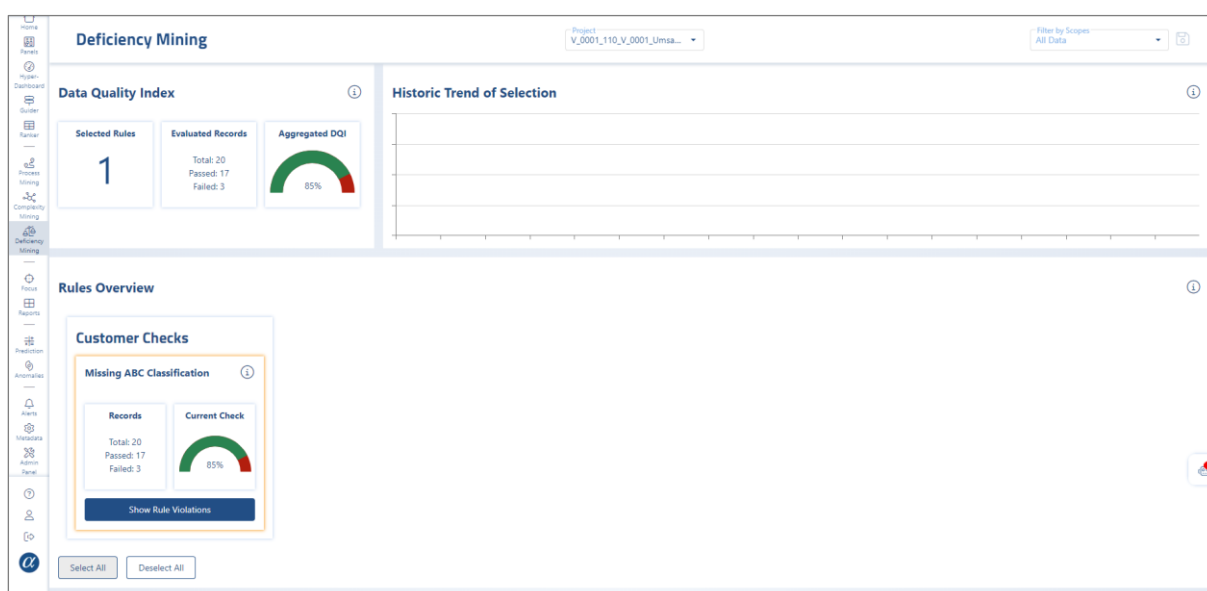
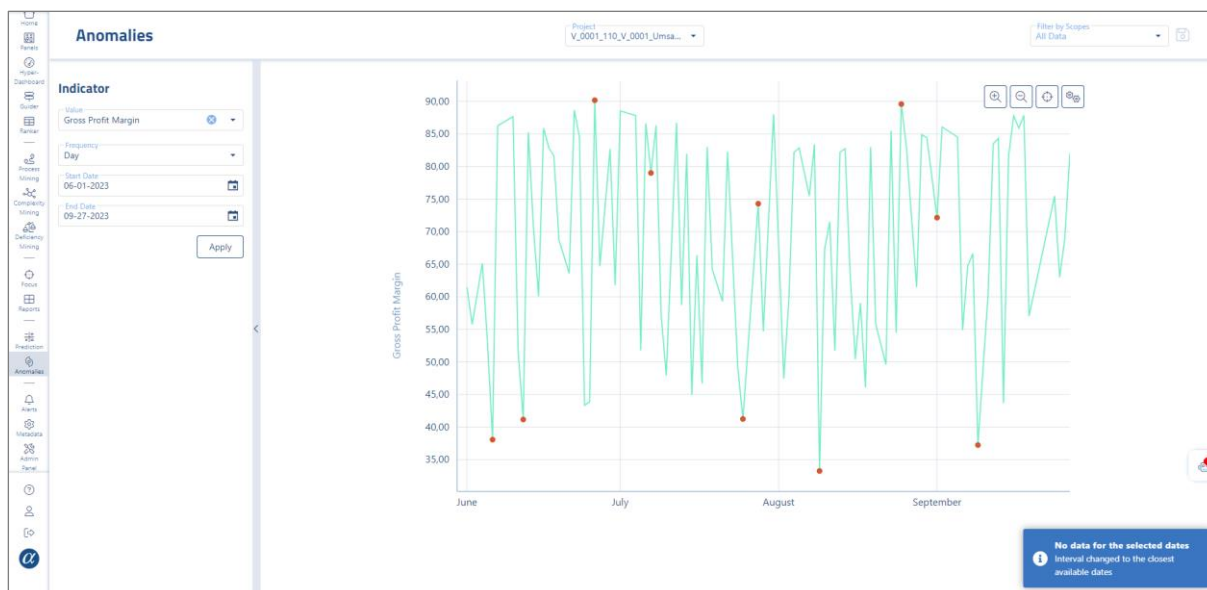
P: +49 228 90954-0 | Fax: +49 228 90954-11 | info@humanit.de | www.nemo-ai.com



Stand: 2023-09-28 – Subject to change

humanIT Software GmbH | Brühler Straße 9 | D-53119 Bonn

P: +49 228 90954-0 | Fax: +49 228 90954-11 | info@humanit.de | www.nemo-ai.com



5. Newly Exported Columns

Most of the added columns have been requested by our customers. They will become available as soon as new data exports and loads have been performed. Based on these data refreshes we will research the feasibility of new default metrics. Those would become available with the next release provided they deem valuable.

Display Name	Description
ServCustDeliveryBox	#ERP-Origin: VS_AuftragAdr.Postfach
ServCustDeliveryCity	#ERP-Origin: VS_AuftragAdr.Ort
ServCustDeliveryCountry	#ERP-Origin: VS_AuftragAdr.Staat
ServCustDeliveryEMail	#ERP-Origin: VS_AuftragAdr.EMail
ServCustDeliveryFirstName	#ERP-Origin: VS_AuftragAdr.Vorname

Stand: 2023-09-28 – Subject to change

humanIT Software GmbH | Brühler Straße 9 | D-53119 Bonn

P: +49 228 90954-0 | Fax: +49 228 90954-11 | info@humanit.de | www.nemo-ai.com

ServCustDeliveryName	#ERP-Origin: VS_AuftragAdr.Name1
ServCustDeliveryState	#ERP-Origin: VS_AuftragAdr.Bundesland
ServCustDeliveryStreet	#ERP-Origin: VS_AuftragAdr.Strasse
ServCustDeliveryStreetNo	#ERP-Origin: VS_AuftragAdr.Hausnummer
ServCustDeliveryTelephone	#ERP-Origin: VS_AuftragAdr.Telefon
ServCustDeliveryZIPBox	#ERP-Origin: VS_AuftragAdr.PLZ_Postfach
ServCustDeliveryZIPCode	#ERP-Origin: VS_AuftragAdr.PLZ
ServCustDestinationBox	#ERP-Origin: VS_AuftragAdr.Postfach
ServCustDestinationCity	#ERP-Origin: VS_AuftragAdr.Ort
ServCustDestinationCountry	#ERP-Origin: VS_AuftragAdr.Staat
ServCustDestinationEMail	#ERP-Origin: VS_AuftragAdr.EMail
ServCustDestinationFirstName	#ERP-Origin: VS_AuftragAdr.Vorname
ServCustDestinationName	#ERP-Origin: VS_AuftragAdr.Name1
ServCustDestinationState	#ERP-Origin: VS_AuftragAdr.Bundesland
ServCustDestinationStreet	#ERP-Origin: VS_AuftragAdr.Strasse
ServCustDestinationStreetNo	#ERP-Origin: VS_AuftragAdr.Hausnummer
ServCustDestinationTelephone	#ERP-Origin: VS_AuftragAdr.Telefon
ServCustDestinationZIPBox	#ERP-Origin: VS_AuftragAdr.PLZ_Postfach
ServCustDestinationZIPCode	#ERP-Origin: VS_AuftragAdr.PLZ
ServCustInvoiceBox	#ERP-Origin: VS_AuftragAdr.Postfach
ServCustInvoiceCity	#ERP-Origin: VS_AuftragAdr.Ort
ServCustInvoiceCountry	#ERP-Origin: VS_AuftragAdr.Staat
ServCustInvoiceEMail	#ERP-Origin: VS_AuftragAdr.EMail
ServCustInvoiceFirstName	#ERP-Origin: VS_AuftragAdr.Vorname
ServCustInvoiceName	#ERP-Origin: VS_AuftragAdr.Name1
ServCustInvoiceState	#ERP-Origin: VS_AuftragAdr.Bundesland
ServCustInvoiceStreet	#ERP-Origin: VS_AuftragAdr.Strasse
ServCustInvoiceStreetNo	#ERP-Origin: VS_AuftragAdr.Hausnummer
ServCustInvoiceTelephone	#ERP-Origin: VS_AuftragAdr.Telefon
ServCustInvoiceZIPBox	#ERP-Origin: VS_AuftragAdr.PLZ_Postfach
ServCustInvoiceZIPCode	#ERP-Origin: VS_AuftragAdr.PLZ
ServCustLocationBox	#ERP-Origin: VS_AuftragAdr.Postfach
ServCustLocationCity	#ERP-Origin: VS_AuftragAdr.Ort
ServCustLocationCountry	#ERP-Origin: VS_AuftragAdr.Staat
ServCustLocationEMail	#ERP-Origin: VS_AuftragAdr.EMail
ServCustLocationFirstName	#ERP-Origin: VS_AuftragAdr.Vorname
ServCustLocationName	#ERP-Origin: VS_AuftragAdr.Name1
ServCustLocationState	#ERP-Origin: VS_AuftragAdr.Bundesland
ServCustLocationStreet	#ERP-Origin: VS_AuftragAdr.Strasse

ServCustLocationStreetNo	#ERP-Origin: VS_AuftragAdr.Hausnummer
ServCustLocationTelephone	#ERP-Origin: VS_AuftragAdr.Telefon
ServCustLocationZIPBox	#ERP-Origin: VS_AuftragAdr.PLZ_Postfach
ServCustLocationZIPCode	#ERP-Origin: VS_AuftragAdr.PLZ
ServOrderActActType	#ERP-Origin: ACM_VS_ServiceOrderActivityTypes_desc
ServOrderActActivity	#ERP-Origin: VS_AuftragMKT.Aktivitaet
ServOrderActChangeDate	#ERP-Origin: VS_AuftragMKT.AenderungDatum
ServOrderActCostsCorpCur	#ERP-Origin: TT_Umsatz.Kosten_aufgelaufen
ServOrderActCostsOwnCur	#ERP-Origin: TT_Umsatz.Kosten_aufgelaufen
ServOrderActCreationDate	#ERP-Origin: VS_AuftragMKT.Anlagedatum
ServOrderActDeliveryDate	#ERP-Origin: VS_AuftragMKT.Liefertermin
ServOrderActDesiredDate	#ERP-Origin: VS_AuftragMKT.Wunschtermin
ServOrderActDriver	#ERP-Origin: stamm.base.cls.SBCMasterFilesAc-countingSvc:prpolInstance:cDriverID
ServOrderActEndDate	#ERP-Origin: MB_Aktivitaet.Endtermin
ServOrderActFactura	#ERP-Origin: VS_AuftragMKT.Faktura
ServOrderActInvoiceFlag	#ERP-Origin: ACM_VS_ServiceOrderCalcIndicators_desc
ServOrderActLengthTime	#ERP-Origin: VS_AuftragMKT.Zeit
ServOrderActLengthTimeUnit	#ERP-Origin: ACM_SB_TimeUnits_desc
ServOrderActLineNo	#ERP-Origin: VS_AuftragMKT.PositionsNr
ServOrderActOID	#ERP-Origin: VS_AuftragMKT.VS_AuftragMKT_Obj
ServOrderActPlanned	#ERP-Origin: VS_AuftragMKT.geplant
ServOrderActQty	#ERP-Origin: VS_AuftragMKT.Einzelmenge
ServOrderActQtyUnit	#ERP-Origin: S_MengeneinheitSpr.Bezeichnung
ServOrderActReportedQty	#ERP-Origin: VS_AuftragMKT.gemeldete_Menge
ServOrderActShippingDate	#ERP-Origin: VS_AuftragMKT.Versandtermin
ServOrderActShippingType	#ERP-Origin: VS_AuftragMKT.Versandart
ServOrderActShippingTypeDesc	#ERP-Origin: S_VersandArtSpr.Bezeichnung
ServOrderActStartDate	#ERP-Origin: MB_Aktivitaet.StartterminAkt
ServOrderActTotalGross	#ERP-Origin: VS_AuftragPos.Gesamtpreis
ServOrderActTotalGrossCorpCur	#ERP-Origin: VS_AuftragPos.Gesamtpreis
ServOrderActTotalGrossOwnCur	#ERP-Origin: VS_AuftragPos.Gesamtpreis
ServOrderActTotalNet	#ERP-Origin: VS_AuftragPos.Gesamtpreis
ServOrderActTotalNetCorpCur	#ERP-Origin: VS_AuftragPos.Gesamtpreis
ServOrderActTotalNetOwnCur	#ERP-Origin: VS_AuftragPos.Gesamtpreis
ServOrderActTotalQty	#ERP-Origin: VS_AuftragMKT.Menge
ServOrderChangeDate	#ERP-Origin: VS_Auftrag.AenderungDatum
ServOrderCheckingDate	#ERP-Origin: VS_Auftrag.Pruefungsdatum
ServOrderCompletionDate	#ERP-Origin: VS_Auftrag.SFertigDatum

ServOrderCostChangeDate	#ERP-Origin: VS_AuftragMKT.AenderungDatum
ServOrderCostCostPriceCorpCur	#ERP-Origin: VS_AuftragMKT.BasePrice
ServOrderCostCostPriceOwnCur	#ERP-Origin: VS_AuftragMKT.BasePrice
ServOrderCostCostsCorpCur	#ERP-Origin: TT_Umsatz.Kosten_aufgelaufen
ServOrderCostCostsOwnCur	#ERP-Origin: TT_Umsatz.Kosten_aufgelaufen
ServOrderCostCreationDate	#ERP-Origin: VS_AuftragMKT.Anlagedatum
ServOrderCostDriver	#ERP-Origin: stamm.base.cls.SBCMasterFilesAccountingSvc;prpolInstance:cDriverID
ServOrderCostFactura	#ERP-Origin: VS_AuftragMKT.Faktura
ServOrderCostInvoiceFlag	#ERP-Origin: ACM_VS_ServiceOrderCalcIndicators_desc
ServOrderCostLineNo	#ERP-Origin: VS_AuftragMKT.PositionsNr
ServOrderCostOID	#ERP-Origin: VS_AuftragMKT.VS_AuftragMKT_Obj
ServOrderCostPlanned	#ERP-Origin: VS_AuftragMKT.geplant
ServOrderCostPositionType	#ERP-Origin:
ServOrderCostQty	#ERP-Origin: VS_AuftragMKT.Einzelmenge
ServOrderCostQtyUnit	#ERP-Origin: S_MengeneinheitSpr.Bezeichnung
ServOrderCostReportedQty	#ERP-Origin: VS_AuftragMKT.gemeldete_Menge
ServOrderCostTotalGross	#ERP-Origin: VS_AuftragPos.Gesamtpreis
ServOrderCostTotalGrossCorpCur	#ERP-Origin: VS_AuftragPos.Gesamtpreis
ServOrderCostTotalGrossOwnCur	#ERP-Origin: VS_AuftragPos.Gesamtpreis
ServOrderCostTotalNet	#ERP-Origin: VS_AuftragPos.Gesamtpreis
ServOrderCostTotalNetCorpCur	#ERP-Origin: VS_AuftragPos.Gesamtpreis
ServOrderCostTotalNetOwnCur	#ERP-Origin: VS_AuftragPos.Gesamtpreis
ServOrderCostTotalQty	#ERP-Origin: VS_AuftragMKT.Einzelmenge
ServOrderCostsCorpCur	#ERP-Origin: Costs from vsnauf00.p
ServOrderCostsOwnCur	#ERP-Origin: Costs from vsnauf00.p
ServOrderCreationDate	#ERP-Origin: VS_Auftrag.AnlageDatum
ServOrderCurrency	#ERP-Origin: S_Waehrung.ISO_KurzBez
ServOrderDesiredDate	#ERP-Origin: VS_Auftrag.Wunschtermin
ServOrderDocDate	#ERP-Origin: VS_Auftrag.Belegdatum
ServOrderDocID	#ERP-Origin: VS_Auftrag.VS_Auftrag_Obj
ServOrderDocNo	#ERP-Origin: VS_Auftrag.Belegnummer
ServOrderDriver	#ERP-Origin: stamm.base.cls.SBCMasterFilesAccountingSvc;prpolInstance:cDriverID
ServOrderEndDate	#ERP-Origin: VS_Auftrag.EndeTermin
ServOrderExchangeRate	#ERP-Origin: VS_Auftrag.Kurs
ServOrderFirstLogDate	#ERP-Origin: SBT_Tracking.CreationDateTime
ServOrderIncoTerm	#ERP-Origin: VS_Auftrag.IncoTerm

ServOrderLineChangeDate	#ERP-Origin: VS_AuftragPos.AenderungDatum
ServOrderLineCompletionDate	#ERP-Origin: VS_AuftragPos.SFertigDatum
ServOrderLineCostsCorpCur	#ERP-Origin: Costs from vsnauf00.p
ServOrderLineCostsOwnCur	#ERP-Origin: Costs from vsnauf00.p
ServOrderLineCreationDate	#ERP-Origin: VS_AuftragPos.Anlagedatum
ServOrderLineInvoiceFlag	#ERP-Origin:
ServOrderLineLineNo	#ERP-Origin: VS_AuftragPos.PositionsNr
ServOrderLineLineOpen	#ERP-Origin: VS_AuftragPos.offen
ServOrderLineOrderState	#ERP-Origin: ACM VS_ServiceStatus_desc
ServOrderLineOrderType	#ERP-Origin: ACM VS_ServiceOrderTypes_desc
ServOrderLinePositionType	type of the line (1 - basic type of the line, 2 - flat rate activities, 3 - flat rate materials, 4 - flat rate costs) #ERP-Origin:
ServOrderLinePositionTypeDesc	type of the line (description) #ERP-Origin:
ServOrderLineQty	#ERP-Origin: VS_AuftragPos.Menge
ServOrderLineQtyUnit	#ERP-Origin: S_MengeneinheitSpr.Bezeichnung
ServOrderLineSerialNo	#ERP-Origin: VS_AuftragPos.Seriennummer
ServOrderLineTotalGross	#ERP-Origin: VS_AuftragPos.Gesamtpreis
ServOrderLineTotalGrossCorpCur	#ERP-Origin: VS_AuftragPos.Gesamtpreis
ServOrderLineTotalGrossOwnCur	#ERP-Origin: VS_AuftragPos.Gesamtpreis
ServOrderLineTotalNet	#ERP-Origin: VS_AuftragPos.Gesamtpreis
ServOrderLineTotalNetCorpCur	#ERP-Origin: VS_AuftragPos.Gesamtpreis
ServOrderLineTotalNetOwnCur	#ERP-Origin: VS_AuftragPos.Gesamtpreis
ServOrderMRPArea	#ERP-Origin: VS_Auftrag.Lagergruppe
ServOrderMatChangeDate	#ERP-Origin: VS_AuftragMKT.AenderungDatum
ServOrderMatCostsCorpCur	#ERP-Origin: TT_Umsatz.Kosten_aufgelaufen
ServOrderMatCostsOwnCur	#ERP-Origin: TT_Umsatz.Kosten_aufgelaufen
ServOrderMatCreationDate	#ERP-Origin: VS_AuftragMKT.Anlagedatum
ServOrderMatDeliveredQty	#ERP-Origin: VS_AuftragMKT.gelieferte_Menge
ServOrderMatDeliveryDate	#ERP-Origin: VS_AuftragMKT.Liefertermin
ServOrderMatDesiredDate	#ERP-Origin: VS_AuftragMKT.Wunschtermin
ServOrderMatDriver	#ERP-Origin: stamm.base.cls.SBCMasterFilesAccountingSvc:prpInstance:cDriverID
ServOrderMatFactura	#ERP-Origin: VS_AuftragMKT.Faktura
ServOrderMatInvoiceFlag	#ERP-Origin: ACM VS_ServiceOrderCalcIndicators_desc
ServOrderMatLineNo	#ERP-Origin: VS_AuftragMKT.PositionsNr
ServOrderMatOID	#ERP-Origin: VS_AuftragMKT.VS_AuftragMKT_Obj
ServOrderMatPlanned	#ERP-Origin: VS_AuftragMKT.geplant
ServOrderMatPositionType	#ERP-Origin:
ServOrderMatQty	#ERP-Origin: VS_AuftragMKT.Einzelmenge

ServOrderMatQtyUnit	#ERP-Origin: S_MengeneinheitSpr.Bezeichnung
ServOrderMatReportedQty	#ERP-Origin: VS_AuftragMKT.gemeldete_Menge
ServOrderMatShippingDate	#ERP-Origin: VS_AuftragMKT.Versandtermin
ServOrderMatStorageArea	#ERP-Origin: VS_AuftragMKT.Lagerort
ServOrderMatStorageAreaCon	#ERP-Origin: VS_AuftragMKT.KO_Lagerort
ServOrderMatStorageAreaCon-Desc	#ERP-Origin: ML_OrtSpr.Bezeichnung
ServOrderMatStorageAreaDesc	#ERP-Origin: ML_OrtSpr.Bezeichnung
ServOrderMatStorageAreaEmpl	#ERP-Origin: VS_AuftragMKT.Bei_Lagerort
ServOrderMatStorageArea-EmplDesc	#ERP-Origin: ML_OrtSpr.Bezeichnung
ServOrderMatTotalGross	#ERP-Origin: VS_AuftragPos.Gesamtpreis
ServOrderMatTotalGrossCorpCur	#ERP-Origin: VS_AuftragPos.Gesamtpreis
ServOrderMatTotalGrossOwnCur	#ERP-Origin: VS_AuftragPos.Gesamtpreis
ServOrderMatTotalNet	#ERP-Origin: VS_AuftragPos.Gesamtpreis
ServOrderMatTotalNetCorpCur	#ERP-Origin: VS_AuftragPos.Gesamtpreis
ServOrderMatTotalNetOwnCur	#ERP-Origin: VS_AuftragPos.Gesamtpreis
ServOrderMatTotalQty	#ERP-Origin: VS_AuftragMKT.Einzelmenge
ServOrderMatTransTime	#ERP-Origin: VS_AuftragMKT.Transportzeit
ServOrderMatTransTimeUnit	#ERP-Origin: ACM MM_TimeUnits_desc
ServOrderOrderCategory	#ERP-Origin: VS_Auftrag.Auftragsart
ServOrderOrderCategoryDesc	#ERP-Origin: S_AuftragsartSpr.Bezeichnung
ServOrderOrderID	#ERP-Origin: ACM VS_ServiceOrderIDs_desc
ServOrderOrderState	#ERP-Origin: ACM VS_ServiceStatus_desc
ServOrderOrderType	#ERP-Origin: ACM VS_ServiceOrderTypes_desc
ServOrderPriceValidityDate	#ERP-Origin: VS_Auftrag.Preisgueltigkeit
ServOrderProfitCenter	#ERP-Origin: VS_Auftrag.SBM_ProfitCenter_ID
ServOrderProjectOID	#ERP-Origin: VS_Auftrag.JBT_Project_Obj
ServOrderRequestedDate	#ERP-Origin: VS_Auftrag.BestellDatum
ServOrderRequestedNo	#ERP-Origin: VS_Auftrag.BelegInfo
ServOrderResAltGroup	#ERP-Origin: MB_Ressource.AltGruppe
ServOrderResAltGroupDesc	#ERP-Origin: M_RessAltGrSpr.Bezeichnung
ServOrderResAltResGroup	#ERP-Origin: MB_Ressource.AlternativGr
ServOrderResBasicResource	#ERP-Origin: MB_Ressource.BasisRess
ServOrderResLineNo	#ERP-Origin: MB_Ressource.RessPos
ServOrderResOID	#ERP-Origin: MB_Ressource.MB_Ressource_Obj
ServOrderResResource	#ERP-Origin: MB_Ressource.Ressource
ServOrderResResourceDesc	#ERP-Origin: M_RessourceSpr.Bezeichnung
ServOrderResResourceType	#ERP-Origin: ACM VS_ServiceOrderCalcIndicators_desc
ServOrderServiceObject	#ERP-Origin: VS_Auftrag.Serviceobjekt

Stand: 2023-09-28 – Subject to change

humanIT Software GmbH | Brühler Straße 9 | D-53119 Bonn

P: +49 228 90954-0 | Fax: +49 228 90954-11 | info@humanit.de | www.nemo-ai.com

ServOrderServiceObjectDesc1	#ERP-Origin: MS_ServiceObjektSpr.Bezeichnung[1]
ServOrderServiceObjectDesc2	#ERP-Origin: MS_ServiceObjektSpr.Bezeichnung[2]
ServOrderServiceObjectDesc3	#ERP-Origin: MS_ServiceObjektSpr.Bezeichnung[3]
ServOrderServiceObjectDesc4	#ERP-Origin: MS_ServiceObjektSpr.Bezeichnung[4]
ServOrderShippingType	#ERP-Origin: VS_Auftrag.Versandart
ServOrderShippingTypeDesc	#ERP-Origin: S_VersandArtSpr.Bezeichnung
ServOrderSpecialist	#ERP-Origin: VS_Auftrag.Sachbearbeiter
ServOrderStartDate	#ERP-Origin: VS_Auftrag.StartTermin
ServOrderTermsOfDelivery	#ERP-Origin: VS_Auftrag.Lieferbedingung
ServOrderTermsOfDeliveryDesc	#ERP-Origin: S_LieferBedSpr.Bezeichnung
ServOrderTotalGross	#ERP-Origin: VS_Auftrag.Bruttosumme[11]
ServOrderTotalGrossCorpCur	#ERP-Origin: VS_Auftrag.Bruttosumme[11]
ServOrderTotalGrossOwnCur	#ERP-Origin: VS_Auftrag.Bruttosumme[11]
ServOrderTotalNet	#ERP-Origin: VS_Auftrag.Nettosumme[11]
ServOrderTotalNetCorpCur	#ERP-Origin: VS_Auftrag.Nettosumme[11]
ServOrderTotalNetOwnCur	#ERP-Origin: VS_Auftrag.Nettosumme[11]

6. Compatibility

NEMO is compatible with all ERP releases from 6.1 onwards.

NEMO is optimized for Chromium based web browsers e.g., Google Chrome or Microsoft Edge.

Functional Limitations

Following functionality is restricted as of now:

- Calculations of Driver and Indicators are not based on Intervals yet.
- Stock movements for material withdrawals are not yet exported in Production.
- Warehouse movements for material storage are not yet exported in Production.

Component Status

- The Distribution app will be discontinued as of NEMO Version 2023-09-29.

Known Issues

- Very large temporary scopes created with Process Mining might fail in other apps.
- All apps relying on a properly configured process date in project settings will throw an error, if the process date column contains just a single value.
- Process Mining Analyzer view:
 - Restrictions without values created with Process Mining Analyzer view cause an error in Process Mining Map view.
 - Global frequency values don't get updated when a different Scope is selected.

7. Documentation

Apart from this Release Letter, further documentation is available on [NEMO Help Portal](#).

Additional documentation (NEW and UPDATED)

- NEMO Open Access (NEW)
- NEMO Data Structure (UPDATED)

8. Availability

All production environments have been updated already.

The new Master Data Management project is currently released with limited access. Reach out to us if you are interested in MDM.

The new UmsatzDetail project is currently released with limited access. Reach out to us if you are interested in migrating your proALPHA Analyzer exports.